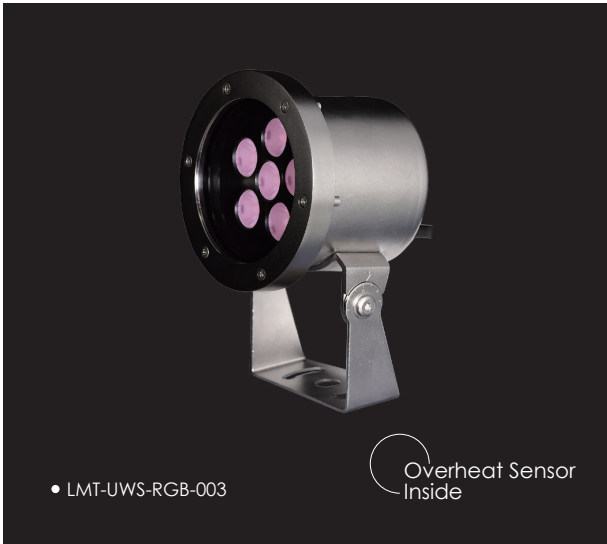
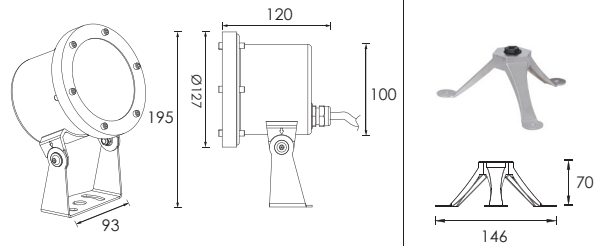


RGB SURFACE MOUNTED UNDERWATER LIGHT



Outer Dimensions

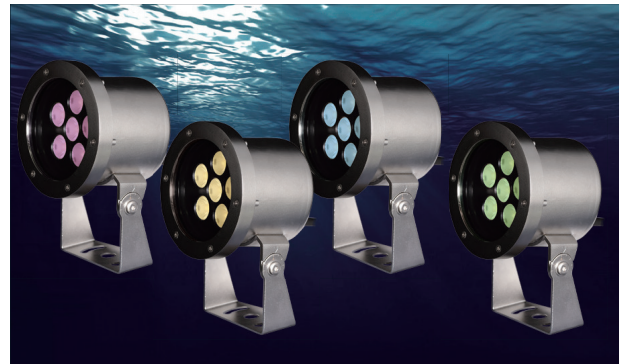
Unit:mm



5002
Tripod-Optional Accessory

Product Specifications

Housing	Hard chromeplated molding shaped stainless steel SUS 316L#
Front cover	Hard chromeplated stainless steel SUS 316L#
Light Window	PMMA 8mm
Gasket	EPDM gasket
Lens	Optical lens,efficiency≥85%
Cable gland	IP68 PG-11 copper with nickel-coated
PCB	Excellent heat conductivity aluminum.coefficient of heat Conductivity≥2.0w/mk
LED Driver	Constant Voltage Input,Constant Current Output
Power Cable	H07RN-F 4X1.0mm ² L=3.0m
Application environment	Temperature of water between -20°C-40°C less than 1 meter depth.
Built-in Overheat Sensor System	Automatic Shutdown at 75°C
LED	SMD 3535 RGB 3 IN 1
Warranty	3 years against manufacturing defecttt



Lens

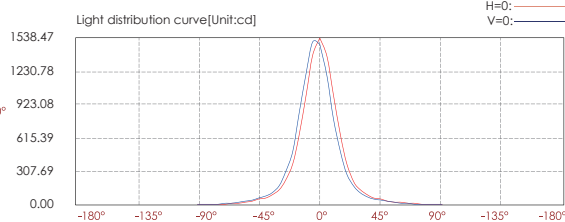
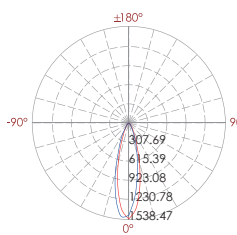
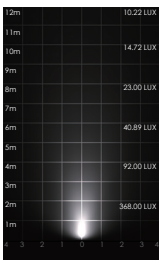


30°

LED Wave Length

- R =620-630 nm
- G =520-530 nm
- B =460-470 nm

Model No.	Power (W)	Lens	Beam angle	Input voltage(V)	Typical operating current(mA)	Typical consumption(W)	Typical luminance(lm)	IP Rating
LMT-UWS-RGB-003	6×3W RGB 3in1	B49	30°	24V DC	1000	24	528	IP68



Lux distance cure

Distance (m)	Center beam LUX	Beam width V	Beam width H
2m	368.00 LUX	0.9m	0.9m
4m	92.00 LUX	1.9m	1.9m
6m	40.89 LUX	2.8m	2.8m
8m	23.00 LUX	3.8m	3.7m
10m	14.72 LUX	4.7m	4.7m
12m	10.22 LUX	5.7m	5.6m

Ver.Spread:26.5 Horiz.Spread:26.4

